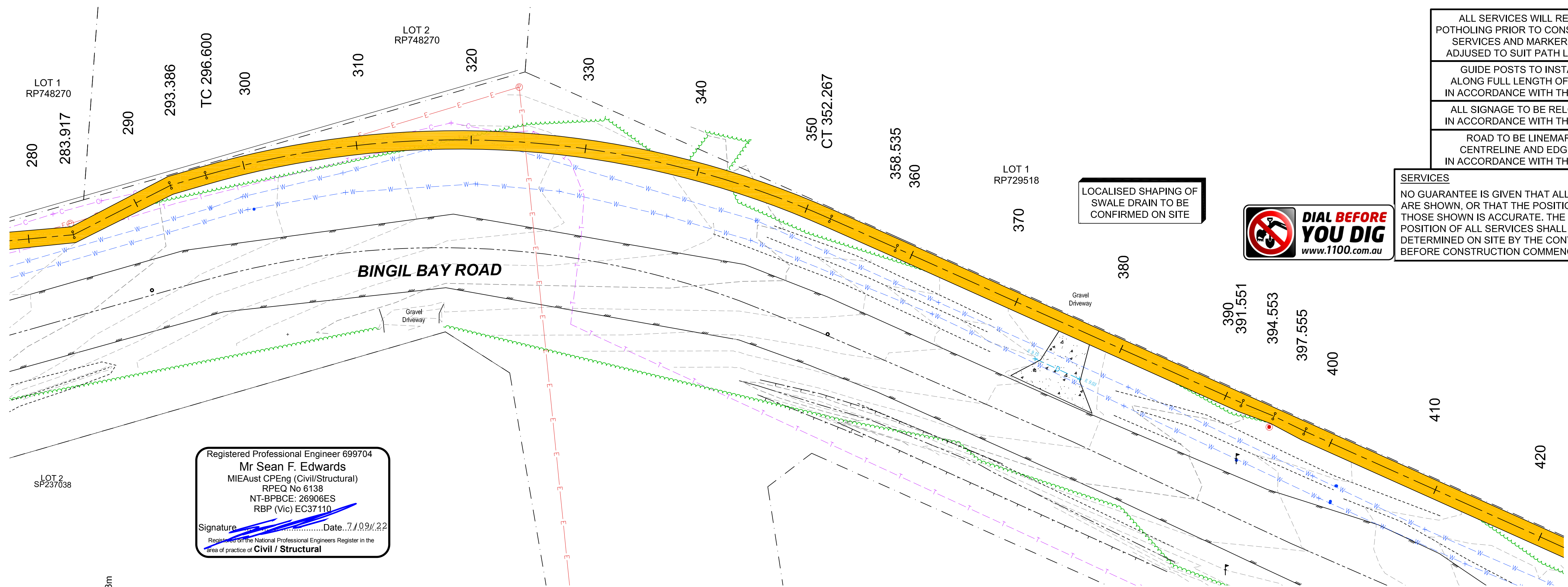
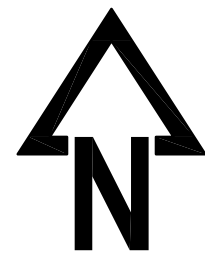


C:\PROJECTS\TEG\21076-02 Bingil Bay Footpath\Drawings\A2.03 - Working Plan - Sheet 3 of 5.dwg - PRINTED ON 17/09/2022 - BY Mark Ferreira



LOCALISED SHAPING OF
SWALE DRAIN TO BE
CONFIRMED ON SITE



SERVICES
NO GUARANTEE IS GIVEN THAT ALL SERVICES
ARE SHOWN, OR THAT THE POSITION OF
THOSE SHOWN IS ACCURATE. THE EXACT
POSITION OF ALL SERVICES SHALL BE
DETERMINED ON SITE BY THE CONTRACTOR
BEFORE CONSTRUCTION COMMENCES.

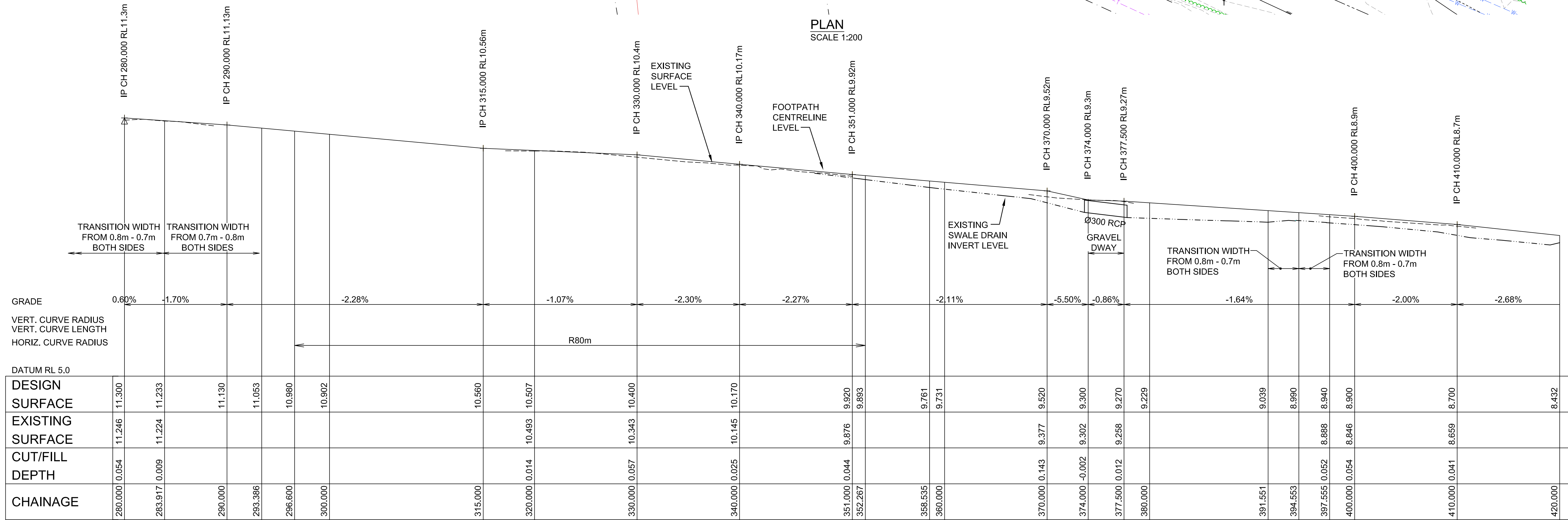
ALL SERVICES WILL REQUIRE
POTHOLING PRIOR TO CONSTRUCTION
SERVICES AND MARKERS TO BE
ADJUSTED TO SUIT PATH LOCATION

GUIDE POSTS TO BE INSTALLED
ALONG FULL LENGTH OF WORKS
IN ACCORDANCE WITH THE MUTCD

ALL SIGNAGE TO BE RELOCATED
IN ACCORDANCE WITH THE MUTCD

ROAD TO BE LINEMARKED
CENTRELINE AND EDGE LINE
IN ACCORDANCE WITH THE MUTCD

PLAN
SCALE 1:200



FOOTPATH CENTRELINE LONGITUDINAL SECTION

HORIZONTAL SCALE 1:200
VERTICAL SCALE 1:50

0m 2 4 6 8 10m 12 14 16 18 20m
SCALE 1:200 (A1 SIZE)
0m 0.5 1 1.5 2 2.5m 3 3.5 4 4.5 5m
SCALE 1:50 (A1 SIZE)

Issue	Amendment	Note: * indicates signatures on original issue or last revision of drawing	Initial	Date
A	COUNCIL INFORMATION COMMENT		MF	28/04/22
B	FOR APPROVAL		SE	19/05/22
C	ISSUED FOR CONSTRUCTION		SE	06/09/22



DESIGN SERVICES
1 CLARE STREET, INNISFAIL QLD.
Ph (07) 4043 8880

Scale	NOT TO SCALE	Sheet Size	A1	Date	20/02/22
Drawn	MF	Datum	GDA2020	AE Proj. No.	
Designed	MF	Approved			
Checked					

WORKING PLAN - SHEET 3 OF 5
BINGIL BAY PEDESTRIAN FOOTPATH

Dwg N°	C2.03
Sheet N°	7 of 19
Revision	C